

Wound assessment made easy

Designed by clinicians, inSight® offers an intuitive, easy to use mobile application for the assessment, documentation and monitoring of wound healing progress. inSight uses structured light and the latest in computer vision technology to reveal the actual topography of the wound.

From acute care to home health, outpatient care, and post-acute care, inSight helps to ensure compliance, quality assurance, and liability prevention through workflow optimization and automated reporting.

Testimonials

"What inSight is capable of is unprecedented. It transformed how we deliver wound care for better quality and higher efficiency."

Alex Solovey, CEO, Cassena Care

"It's amazing how quick and intuitive [inSight] is. More importantly, I am getting accurate measurements that I can confidently rely on for clinical management."

Suzanne Lee-Allen, Wound Care Nurse, The Glenhaven Organization

eKare Inc.
3040 Williams Dr #610,
Fairfax, VA 22031

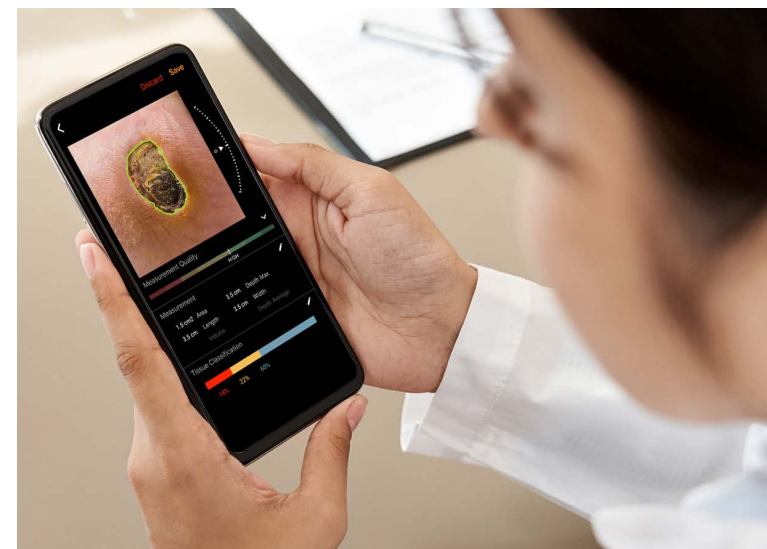
 1-844-443-5273

 info@ekare.ai

 www.ekare.ai



Wound Assessment Simplified



3D Wound Assessment
Improve wound care
outcomes & documentation



Designed for wound care clinicians

✓ Standardized Wound Assessments

Accurate and reliable 3D wound assessment, including depth and wound bed classification, directly on your mobile device at the point of care.

✓ Quality & Efficiency

Improve clinical quality and cost efficiency through optimized workflow and effective monitoring.

✓ Risk & Liability Prevention

Minimize compliance and litigation risks through automated documentation and reporting.

✓ Business Intelligence & Analytics

Leverage real-world data, analytics and insights to understand impact of treatment, healing progress and patient reported outcomes.

Frequently Asked Questions

? Can I integrate inSight with my current EHR?

Yes. inSight is already integrated with some of the largest EHR providers.

? Do I need internet connectivity to use inSight?

No. inSight has store-and-forward capability that allows the system to be used without internet connection.

? How can I trust that inSight is accurate and reliable?

inSight is both FDA registered and CE marked. The system has gone through stringent technical and clinical validation.

For details, please visit www.ekare.ai

? How long does it take to measure a wound using inSight?

Under 10 seconds.

? Do I need any specialized training to use inSight?

No. If you know how to take a photo using a phone or tablet, you can operate inSight.

It's as easy as 1...2...3



1 Point & click

Reduce wound measurement and document time to minutes. Our image assessment requires only a simple point and click.

2 Circle & Swipe

Circle around the wound and mark inside the wound to easily compute surface area, depth, volume, and wound bed classification.



3 Measurement Output

Through a user guided process, our application delivers high accuracy and consistency, while ensuring standardization.

